



GMT MONTHLY MEMBERSHIP PROGRESS REPORT

Results as of: 4/30/2019

Multiple District A

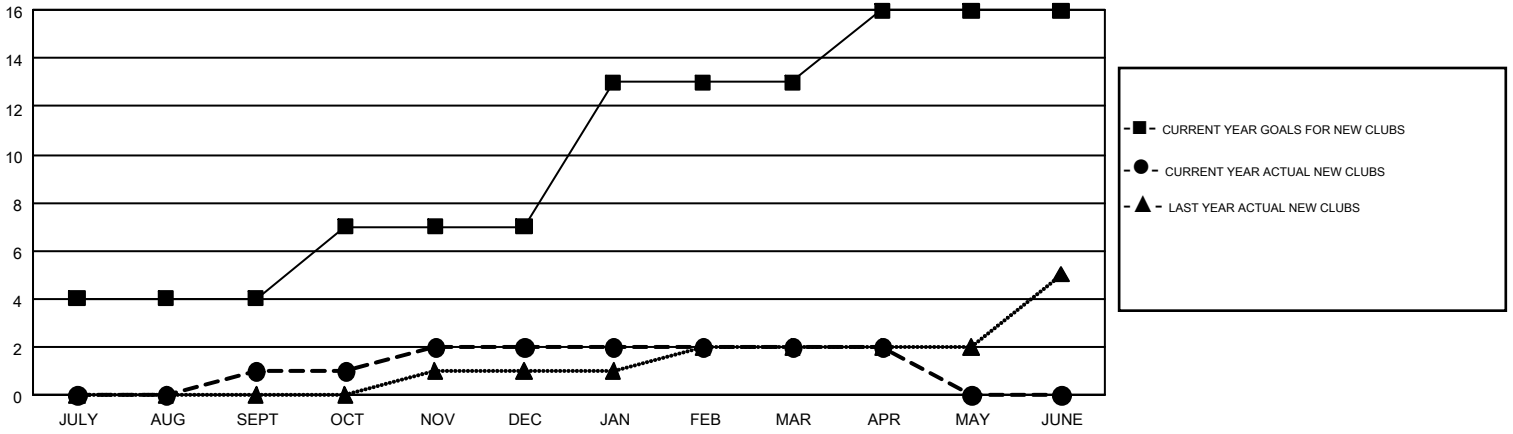
LOCATION: ONTARIO

GMT: CHRIS LEWIS

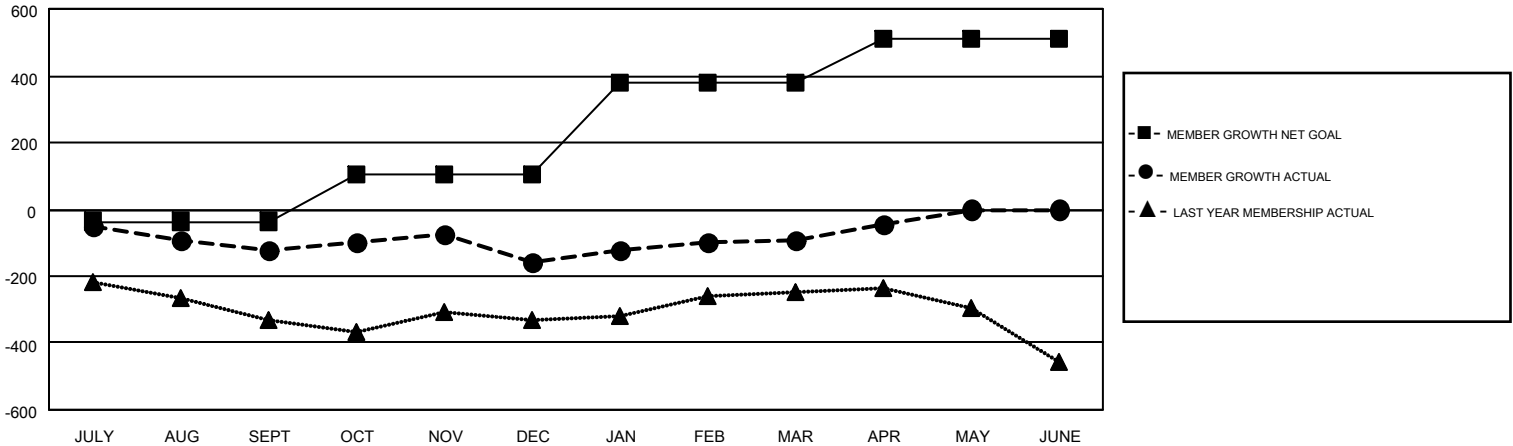
GMT CA 2

| Clubs | | | | Members | | | |
|-----------------------|---------------|-----------|---------------|-----------------------|------------------------|----------------------|--|
| RESULTS FOR 2018-2019 | | | | RESULTS FOR 2018-2019 | | | |
| QUARTER | NEW CLUB GOAL | NEW CLUBS | DROPPED CLUBS | QUARTER | MEMBER GROWTH NET GOAL | MEMBER GROWTH ACTUAL | DROPPED MEMBERS ACTUAL (including transfers) |
| JULY/AUG/SEPT | 4 | 1 | 2 | JULY/AUG/SEPT | -36 | 181 | 259 |
| OCT/NOV/DEC | 3 | 1 | 1 | OCT/NOV/DEC | 141 | 428 | 417 |
| JAN/FEB/MAR | 6 | 0 | 1 | JAN/FEB/MAR | 274 | 340 | 234 |
| APR/MAY/JUNE | 3 | 0 | 1 | APR/MAY/JUNE | 132 | 161 | 93 |

GOALS AND ACTUAL NEW CLUBS CUMULATIVE



GOALS AND ACTUAL MEMBERS CUMULATIVE



| | | | |
|------------------------|--|---------------------------------|----------------|
| DROPPED CLUBS: 5 | 329 CLUBS OF 533 ADDED 1 OR MORE NEW MEMBERS | <u>GENDER DISTRIBUTION</u> | |
| <u>DROPPED MEMBERS</u> | | MALE | 9,060 (70.22%) |
| DECEASED | 173 | FEMALE | 3,842 (29.78%) |
| CLUB CANCELLED | 24 | TOTAL FAMILY UNIT MEMBERS | |
| OTHER | 804 | 2,343 | |
| TOTAL | 1,001 | FAMILY MEMBERS PAYING HALF DUES | |
| | | 1,201 | |

[CLICK HERE FOR CUMULATIVE MEMBERSHIP DATA](#)